



# TRAFFIC

ENGINEERING  
SERVICES



# EXPERIENCE THE MATTERN & CRAIG DIFFERENCE

Mattern & Craig distinguishes itself in the marketplace by delivering on three important commitments to its clients...

## OUR COMMITMENT TO YOU:

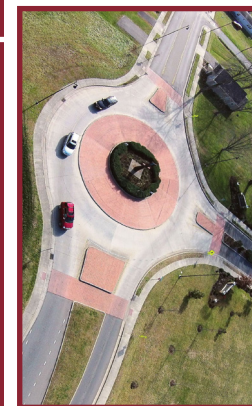
- We will deliver personal attention, professional insight and responsiveness unmatched by any engineering firm in our markets.
- A senior, hands-on engineer will serve as the project manager on every project, providing on-the-job project planning expertise, problem solving and accountability.
- Safety of all modes of "traffic" is of the utmost important for any of our projects.

## TRAFFIC ENGINEERING OVERVIEW

Mattern & Craig is your source for traffic engineering services throughout Virginia, Tennessee, and North Carolina. Our professional engineers are supported by a dedicated team of design technicians, surveyors, and administrative staff.

Our engineers are well versed in the latest publications and methodologies relative to the traffic engineering field. Our firm uses the latest technology and software available to effectively find solutions to various traffic issues. We possess the skills and resources necessary to meet specific traffic engineering needs.

Our major traffic engineering clients include the Departments of Transportation in Virginia, Tennessee, and North Carolina, as well as many local governments within these states.

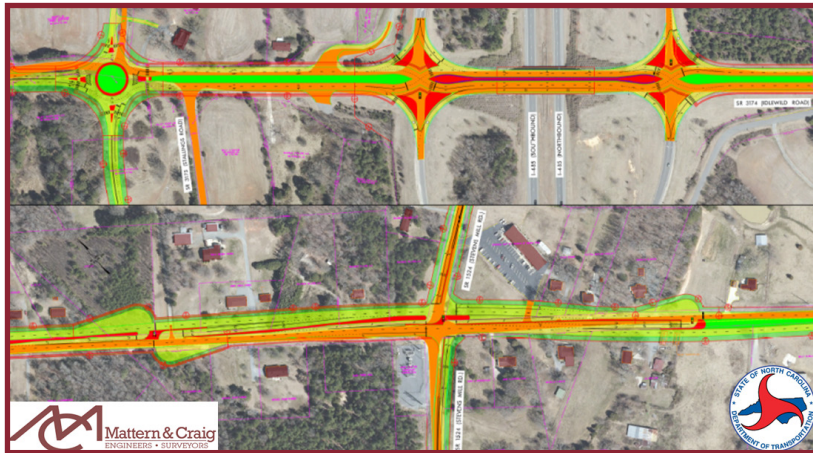


## TRAFFIC ENGINEERING SERVICES

- Traffic Data Collection
- Traffic Signal Warrants Analysis and Signal Design
- Traffic Impact Studies/Traffic Impact Analyses (TIS/TIA)
- Signing & Pavement Marking Design
- Isolated Signal Timing
- Coordinated Signal System Design & Timing
- Intelligent Transportation System (ITS) Development & Design
- Traffic Calming Analysis & Design
- Corridor Analysis
- Maintenance of Traffic Plans
- School Signalization/Flashing Beacon Design
- Roundabout Analysis & Design
- Crash Data Analysis
- Roadway Safety Audits

## TECHNOLOGY / SOFTWARE

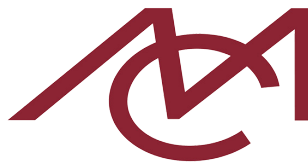
- Highway Capacity Software (HCS)
- Synchro with Sim-Traffic
- Interactive Hwy Safety Design Model (IHSDM)
- PC-Warrants
- GuidSIGN
- OTISS
- SIDRA
- Tru-Traffic
- PetraPro
- Rodel



# Mattern & Craig ENGINEERS • SURVEYORS

# TRAFFIC

## ENGINEERING SERVICES



**Mattern & Craig**  
ENGINEERS • SURVEYORS

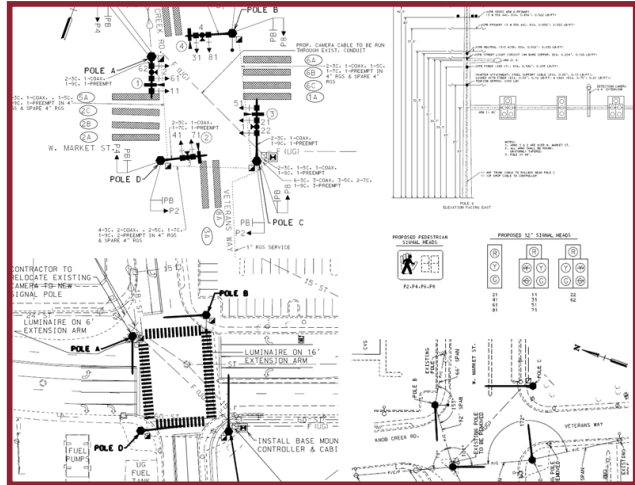
# Engineering solutions for change and growth.

## Regional Knowledge + Engineering Expertise = Project Success

As a regional engineering firm, we provide clients with a powerful combination for project success - 1) first-hand knowledge of the project area and the priorities and concerns of its citizenry; and, 2) depth and breadth of traffic engineering expertise, to meet the demand for safety and traffic flow.

We focus on four aspects of traffic engineering:

- Planning & Studies
- Design & Engineering
- Field Implementation
- Common Sense Engineering



### ROANOKE

701 First Street, S.W.  
Roanoke, VA 24016

540.345.9342  
540.345.7691 - Fax

### KINGSPORT

429 Clay Street  
Kingsport, TN 37660

423.245.4970  
540.345.7691 - Fax

### JOHNSON CITY

403 East Market Street  
Johnson City, TN 37601

423.979.2220  
540.345.7691 - Fax

### ASHEVILLE

12 Broad Street  
Asheville, NC 28801

828.254.2201  
540.345.7691 - Fax

### HICKORY

231 16th Avenue, N.E.  
Hickory, NC 28601

828.855.2233  
540.345.7691 - Fax

### CHARLESTON

1565 Sam Rittenberg Blvd.  
Suite 101  
Charleston SC 29407

843.225.8391  
540.345.7691 - Fax